

Movers and Shakers

Dawson's model

A person is historically significant if their actions match most of these statements:

- They made big changes in their lifetime.
- They made a lot of people's lives better or worse.
- They changed the way people think.
- Their ideas are still used today.
- They were a very good or very bad role model.

Categories of significant people

Significant people can be sorted into groups by what they did.

- An **activist** is a person who feels strongly about helping people, other living things or the planet. They protest to make changes happen.
- An **explorer** is a person who travels to places to find out what is there.
- A **scientist** is a person who discovers or invents new things.
- An **artist** is a person who creates works of art, including pieces of music, plays, poems, paintings, dances or sculptures.
- A **monarch** is a king or queen who rules a kingdom.

Examples of significant people

There have been many significant people throughout history. These are some examples.



Mary Anning studied fossils and shared her knowledge.



Paul Cézanne helped to create a new style of art called Cubism.



Emmeline Pankhurst stood up for women's rights.



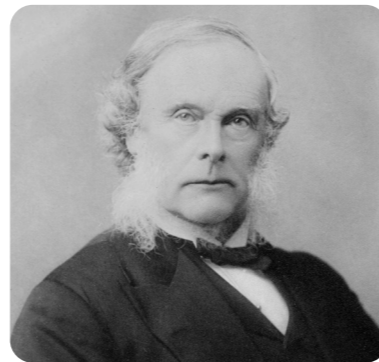
Neil Armstrong was the first person to walk on the Moon.



Henry VIII was the king who formed the Church of England.



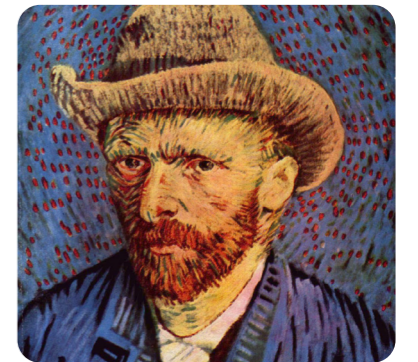
Rosa Parks wanted black people to have the same rights as white people.



Joseph Lister found out that dirty conditions in hospitals caused infections.



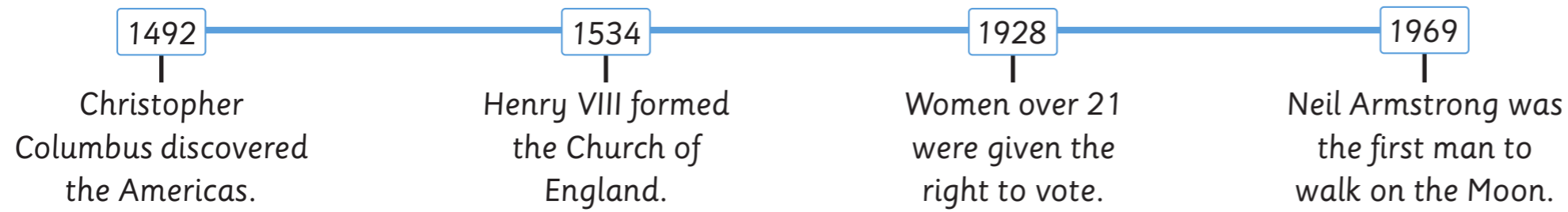
Christopher Columbus was the first European person to discover the Americas.



Vincent van Gogh created a new style of painting.

Timelines

A timeline can be used to put important dates and events in chronological order. The numbers are dates that tell you when an event happened.



Significant people of today

Significant people are still making big changes in the world today.



Malala Yousafzai campaigns for girls to have the right to go to school.



Greta Thunberg campaigns to stop climate change.



Elon Musk is trying to make a rocket to go to Mars.



JK Rowling wrote the Harry Potter books.

Memorials

A memorial is made to remind people of a significant person or event. Memorials can include statues, monuments, plaques and stamps.



Statue of Emmeline Pankhurst



Monument to Captain James Cook



Plaque for Mary Anning



Stamp of Mahatma Gandhi

Time words

There are many useful words that help us talk about time.

- A **year** is 365 days.
- A **decade** is 10 years.
- A **century** is 100 years.

Glossary

discover To see or find something before anyone else.

invent To design or make something that has never been made before.

monument A structure built to remember an event or person.

plaque A flat piece of metal or stone with writing on it.

protest An event where people come together to show that they are unhappy about something.

significant Something that is important.

statue An object usually made from stone or metal to look like a person.